

Pitched roof mounting



System introduction

Pitched roof mounting is used for all kinds of pitched roof with different tile shapes . It has developed as an universal system.It could be used for commercial and residential roof solar system. We finished maximum pre-assembly in factory to ensure significant labor saving for customers. Accurate designing and pre-installation eliminates cutting in project place, and make the fastest installation possible. High quality metal material and subsequent process make the mounting system for long time anticorrosive. Static calculation and test will ensure our promise to customers, stable and reliable.

Technical Data

Installation site: Pitched roof

Tile angle: 10-60 degree

Building height: Up to 20m

PV modules: framed or unframed

Module layout : Vertical or horizontal

Material: Alu 6005 T5 & SUS304

Color: Natural or customized

Standards: Eurocode 1, DIN 1055, AS/NZS 1170

Warranty: 12 years warranty

Component List



Alu Roofhook



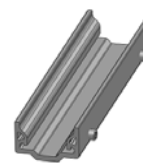
SUS Roofhook



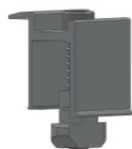
Hanger bolt



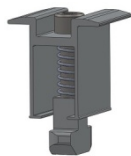
Wood Screw



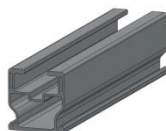
Rail 40*40 Splice



Side Clamp



Middle Clamp



Rail 40*40



Thinfilm Side Clamp



Thinfilm Middle Clamp